

Connection to a Network license

Caution:

1/ **Connecting to a network license requires that it has already been activated by following the procedure [Activating a network license](#)**

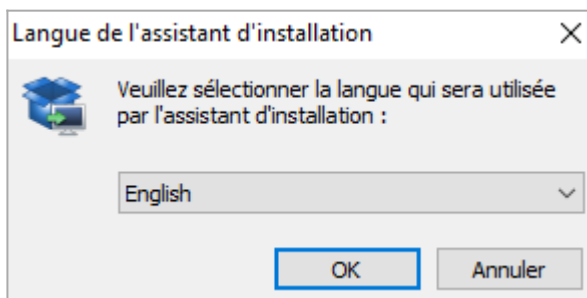
2/ To install Phase Manager it is **highly recommended to have administrator rights**

3/ To use the license it is necessary to **MODIFY rights on the UNC license directory**

1/ Installation of Phase Manager

Download Phase Manager (click here for last release). **Right click** on the executable than run it with **Administrator rights**

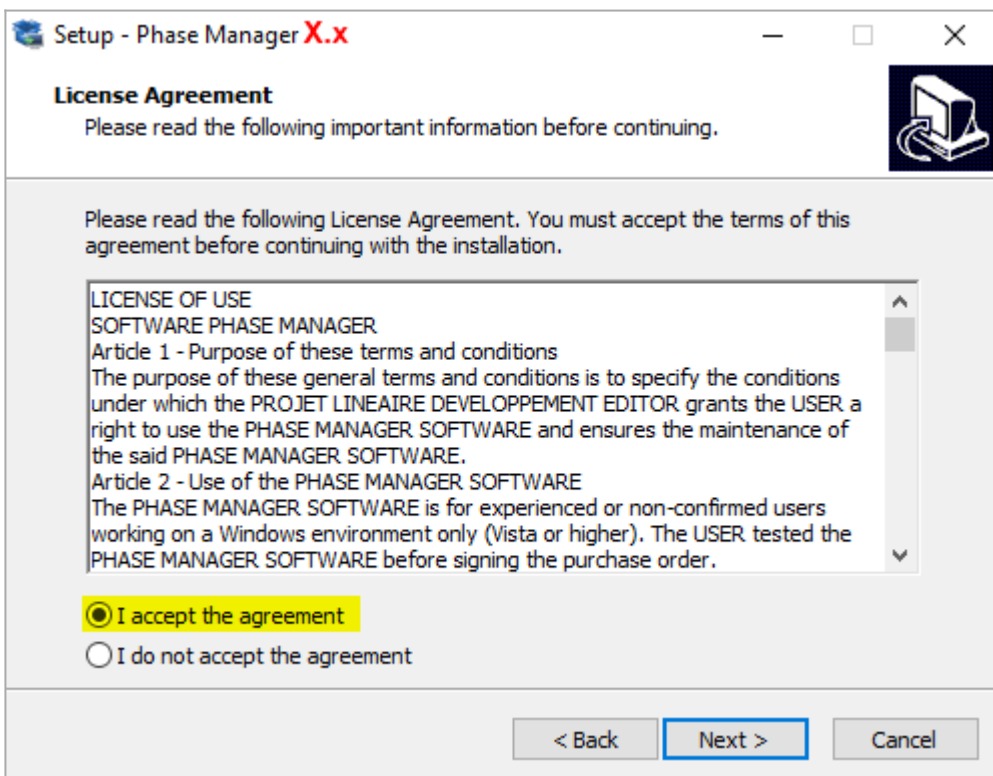
Once launched, choose the installation language:



Skip the welcome screen by clicking on **Next** :

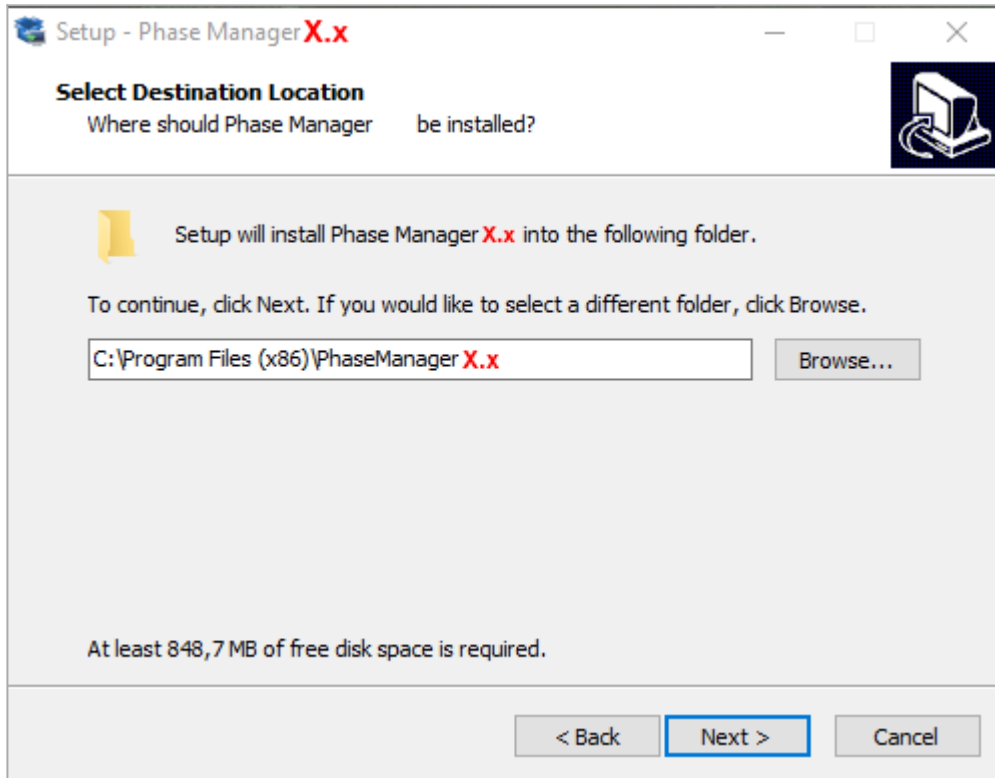


Read then accept the license agreement to continue the installation by clicking on **Next** :

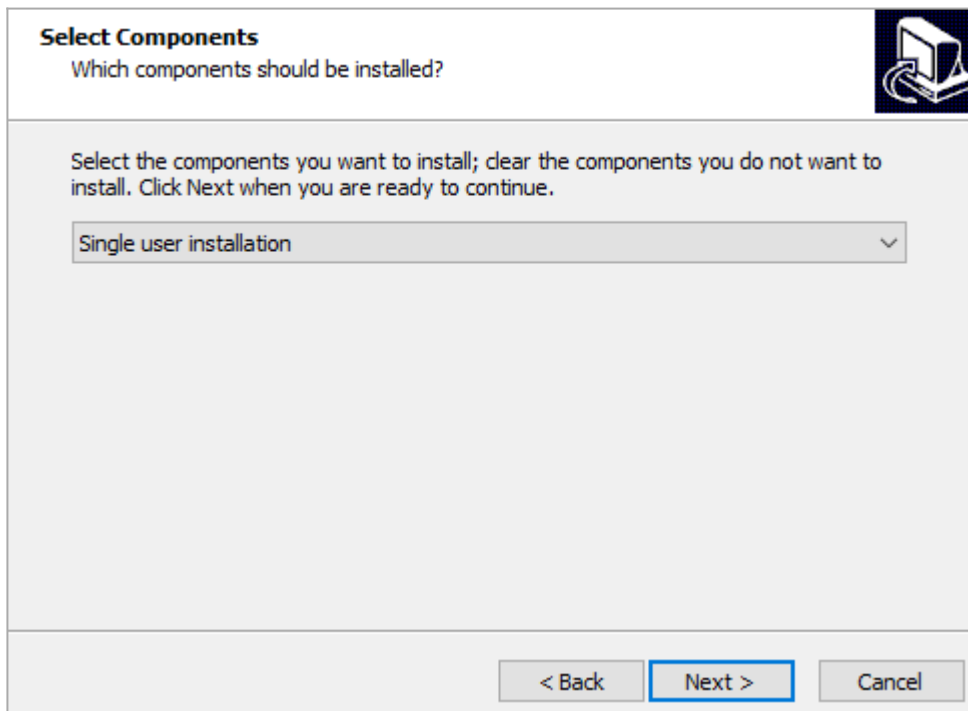


By default the setup will ask you to install Phase Manager in : **C:\Program Files (x86)\PhaseManager X**
If you didn't launch it with admin right , it will propose you to install Phase Manager in :

C:\Users\Public\Documents\PhaseManager7





Choose '**Single user installation**'



Validate the Start Menu Folder screen by clicking on **Next** :

Select Start Menu Folder
Where should Setup place the program's shortcuts?



 Setup will create the program's shortcuts in the following Start Menu folder.
To continue, click Next. If you would like to select a different folder, click Browse.

Projet Lineaire

Choose and validate the icons creation screen by clicking **Next** :

Select the additional tasks you would like Setup to perform while installing Phase Manager **X.x**, then click Next.

Additional icons:

Create a desktop icon

Create a Quick Launch icon

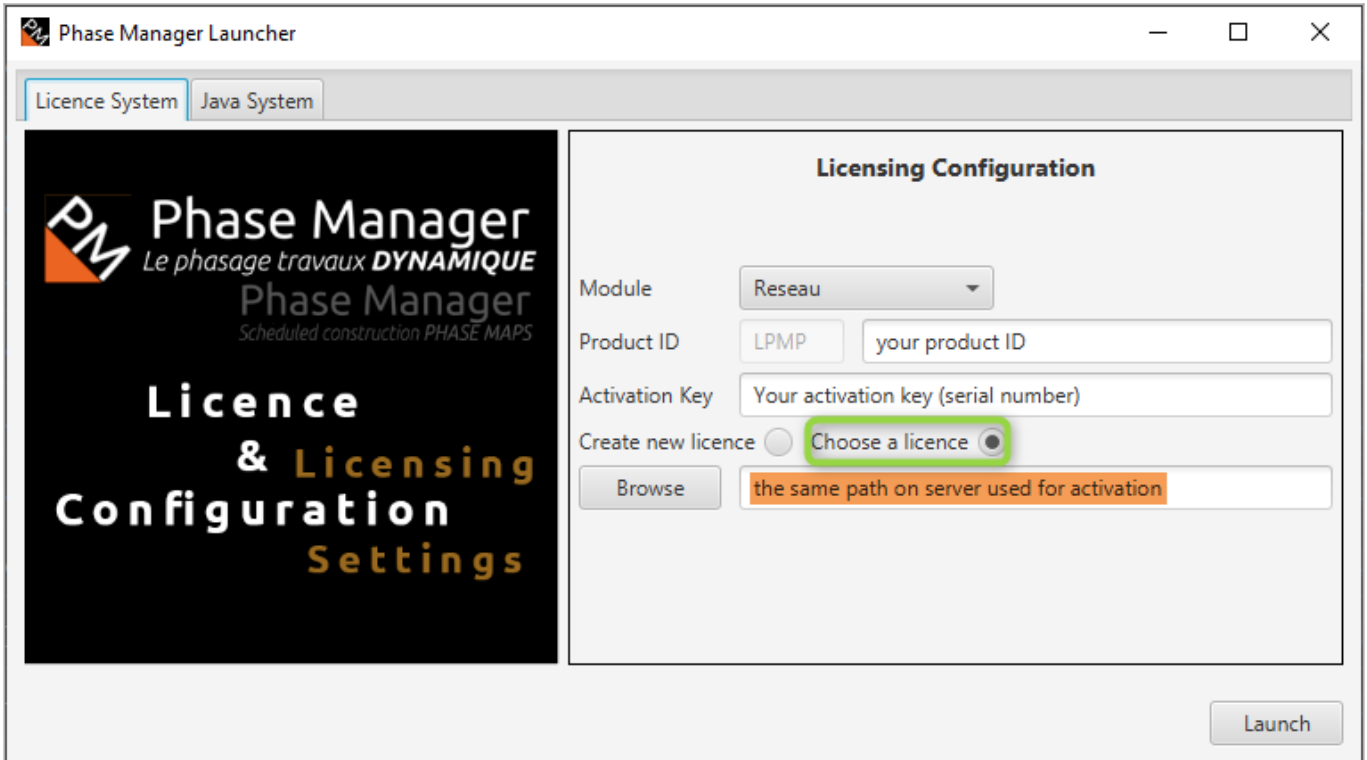
On the following screen click on **Install** then once installation is complete, click on **Finish**

2/ Connection to the network license

Once Phase Manager is installed, double-click on its icon to launch it.

At first launch, the license configurator will display:

To connect to your network license, you will need to fill in the following fields:



Phase Manager Launcher

Licence System Java System

Phase Manager
Le phasage travaux **DYNAMIQUE**
Phase Manager
Scheduled construction PHASE MAPS

Licence & Licensing Configuration Settings

Licensing Configuration

Module: Reseau

Product ID: LPMP your product ID

Activation Key: Your activation key (serial number)

Create new licence: Choose a licence

Browse: the same path on server used for activation

Launch

Module

Choose **Network | Réseau**:

FYI : If you want to test Phase Manager for 14 days, choose 'Demo'.

Product ID

Fill in the Product ID that's been sent to you by Projet Linéaire:

- licence pattern : LPMM-00NNN0 X 00abcDEF (**NNN** is the number of your license, and **X** the version)
- **only paste the right part of your Product-ID, after the '-'**

Activation key

Fill in the Serial number sent to you by Projet Linéaire or reseller.

Licence

Tick "*Choose a licence*", then **indicate the location of the license file**: Indicate its UNC path using the

following pattern : `\\SERVER\SHARE\FOLDER**`:

Click now on the button Launch to run Phase Manager.

- If you need to, feel free to contact our customer support at support@projetlineaire.com