

Installation and Network license activation

Caution:

1/ 1/ The activation of the network license must only be done once! All workstations that then want to use the license should refer to the procedure: [Connection to a network license](#)

2/ To install Phase Manager it is **highly recommended to have administrator rights**

3/ To use the license it is necessary to **MODIFY rights on the UNC license directory**

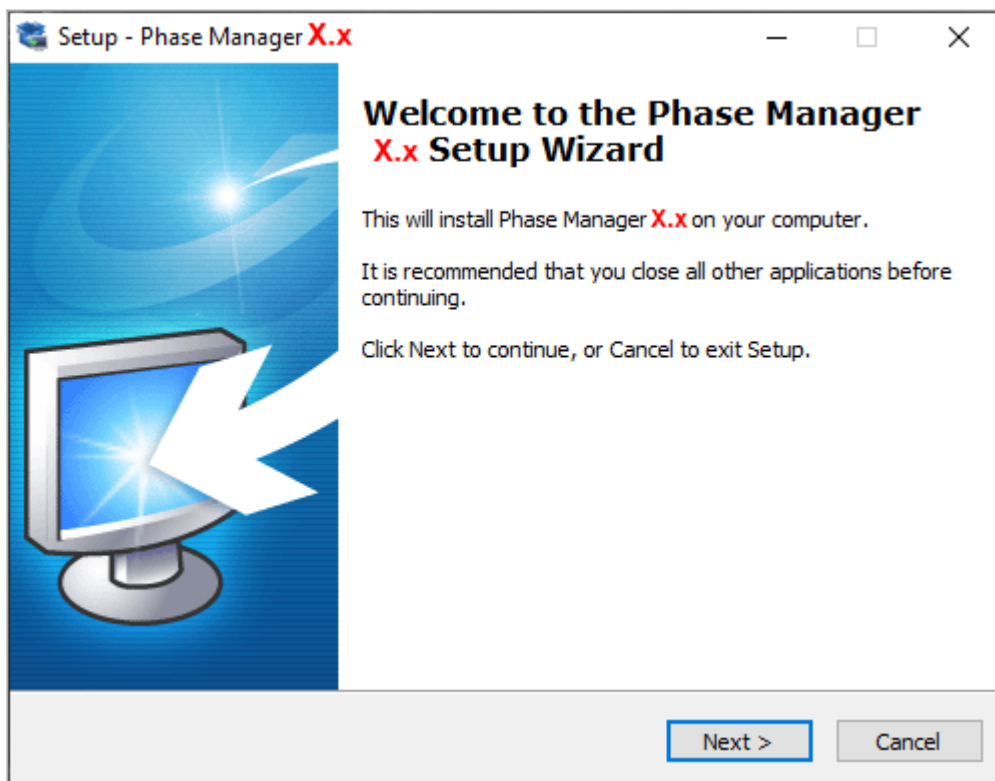
1/ Installation of Phase Manager

Download Phase Manager. **Right click** on the executable than run it with **Administrator rights**

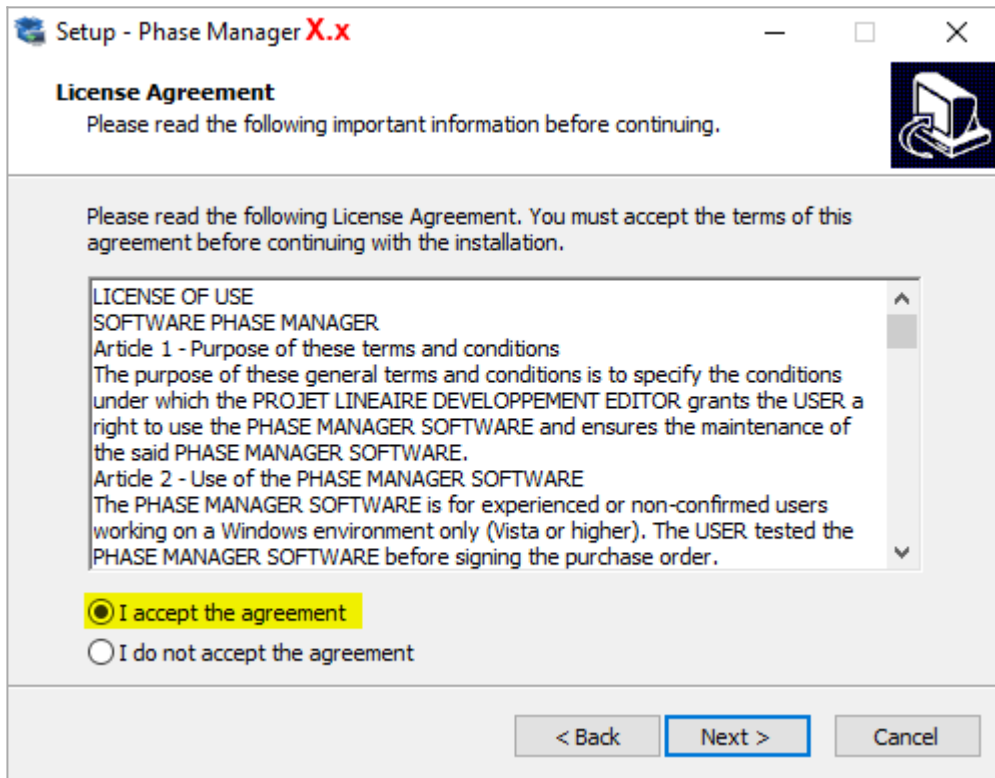
Once launched, choose the installation language:



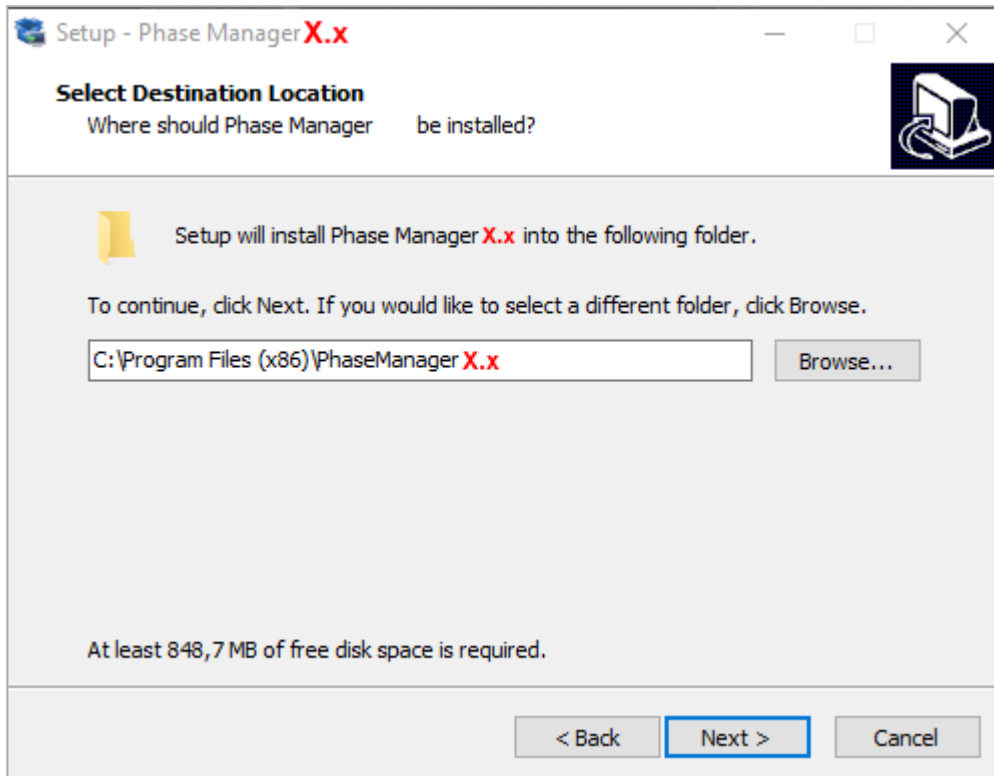
Skip the welcome screen by clicking on **Next** :



Read then accept the license agreement to continue the installation by clicking on **Next** :



By default the setup will ask you to install Phase Manager in : **C:\Program Files (x86)\PhaseManager X**
If you didn't launch it with admin right , it will propose you to install Phase Manager in :
C:\Users\Public\Documents\PhaseManager7



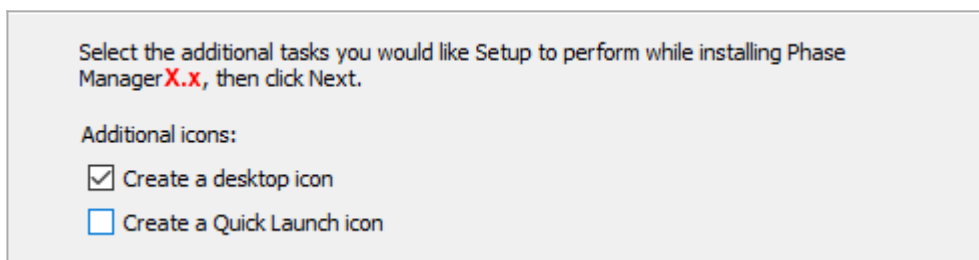
Choose '**Single user installation**'



Validate the Start Menu Folder screen by clicking on **Next** :



Choose and validate the icons creation screen by clicking **Next** :

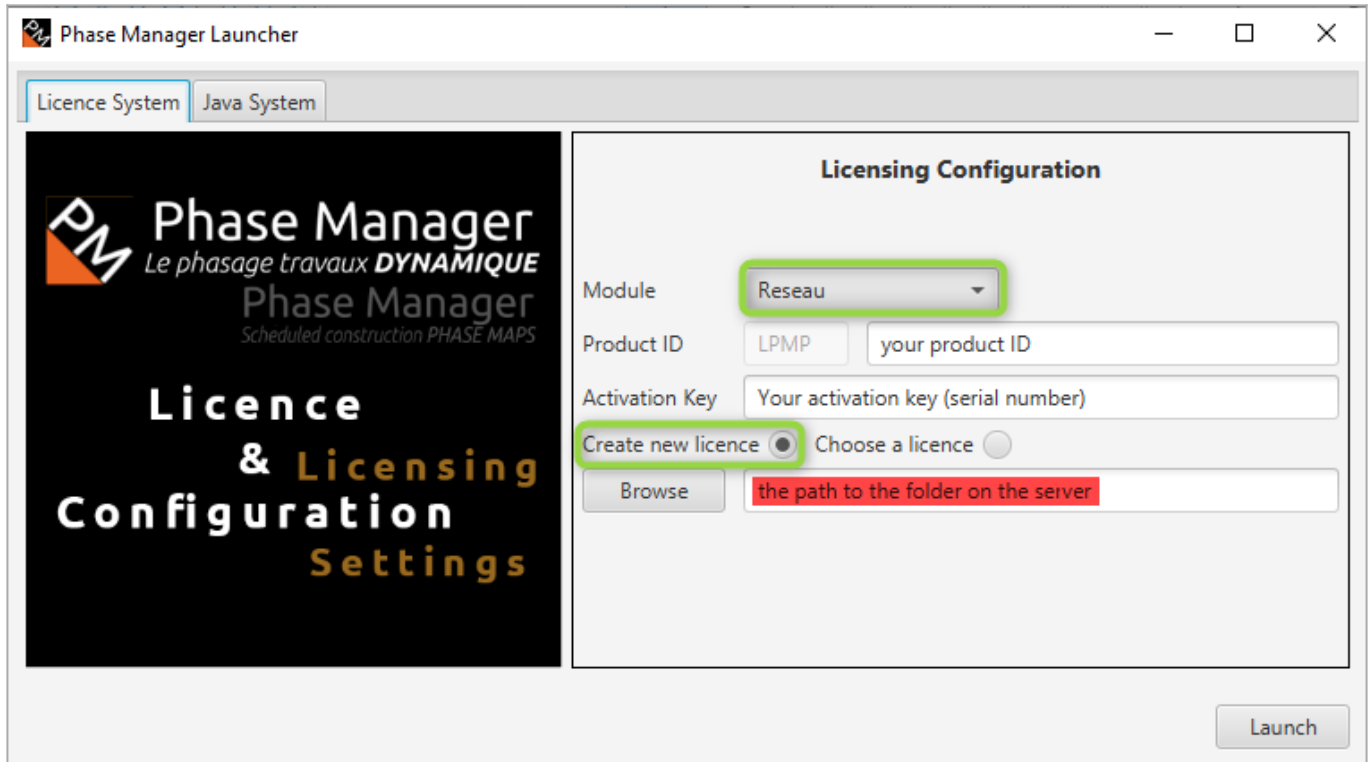


On the following screen click on **Install** then once installation is complete, click on **Finish**

2/ Network license Activation

Once Phase Manager is installed, double-click on its icon to launch it.
At first launch, the license configurator will display:

To activate your network license, you will need to fill in the following fields:



The screenshot shows the 'Phase Manager Launcher' window with the 'Licence System' tab selected. The 'Licensing Configuration' section contains the following fields and options:

- Module:** A dropdown menu with 'Reseau' selected.
- Product ID:** A text field containing 'LPMP' and a secondary field for 'your product ID'.
- Activation Key:** A text field with the placeholder 'Your activation key (serial number)'.
- License Selection:** Two radio buttons: 'Create new licence' (selected) and 'Choose a licence'.
- Browse:** A button next to a text field containing 'the path to the folder on the server'.
- Launch:** A button at the bottom right.

Module

Choose **Network | Réseau**:

Product ID

Fill in the Product ID that's been sent to you by Projet Linéaire or reseller:

- licence pattern : LPMM-00NNN0 X 00abcDEF (**NNN** is the number of your license, and **X** the version)
- **only paste the right part of your Product-ID, after the '-' :**

Activation key

Fill in the Serial number sent to you by Projet Linéaire or reseller.

Licence

Choose "Create new licence".

By clicking on the button **Browse** you can choose the location of the license file that will be created by Phase Manager:

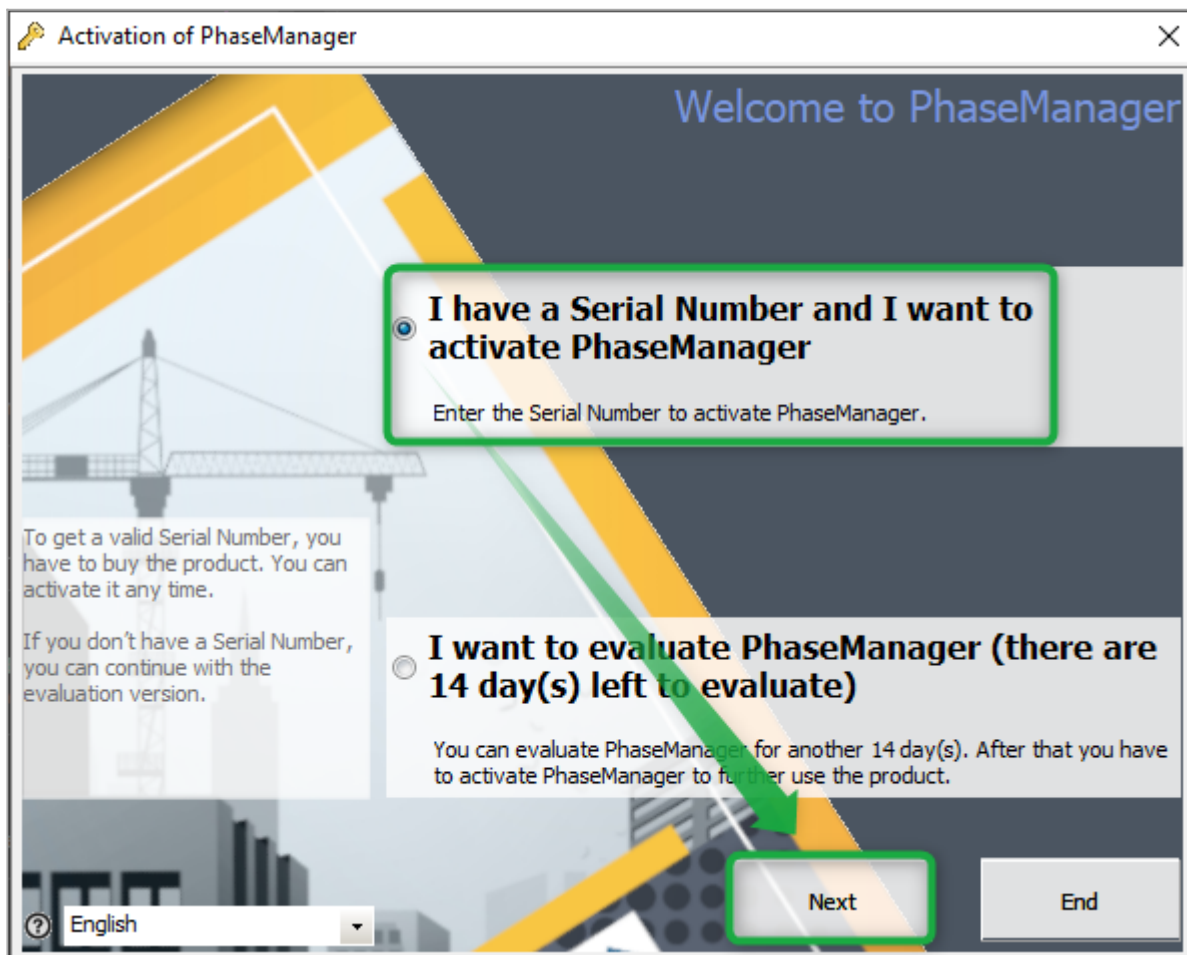
Indicate a UNC path using the following pattern : **\\SERVER_NAME\SHARE\FOLDER:**

3/ License activation

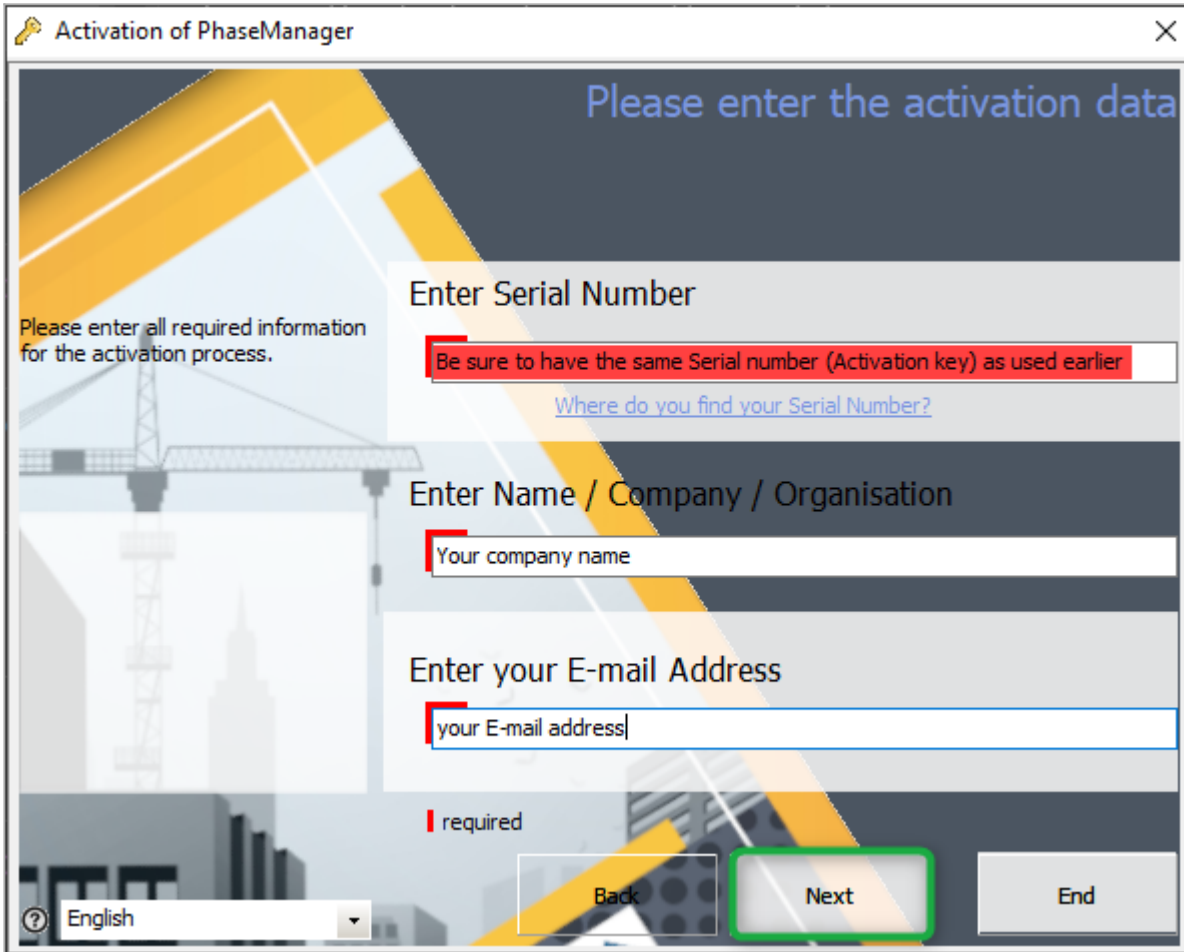
Click now on the button **Launch** to activate your licence.

Beware : an Internet connection is mandatory to activate the license !

To activate the license, switch to English then choose the option below and click on **Next** :



- Fill-in all required data then click on Next:
- **The Serial number is the Activation Key that's been used at step 2 in the license configurator**



Activation of PhaseManager

Please enter the activation data

Please enter all required information for the activation process.

Enter Serial Number

Be sure to have the same Serial number (Activation key) as used earlier

[Where do you find your Serial Number?](#)

Enter Name / Company / Organisation

Your company name

Enter your E-mail Address

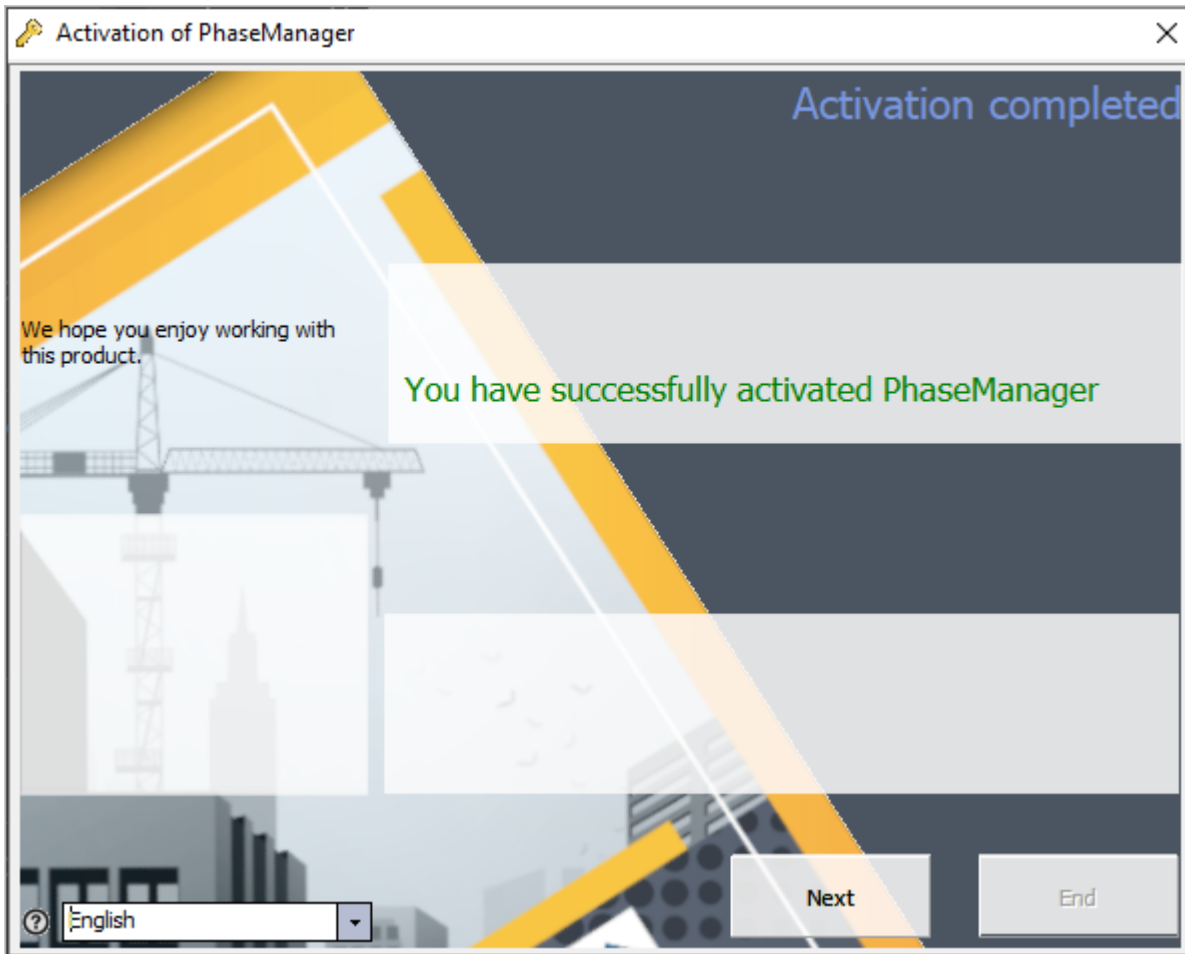
your E-mail address

required

English

Back Next End

- Check that you ARE connected to INTERNET then click on Next twice.
- If the following message is displayed, that means that Phase Manager did activate right. Click on Next to run Phase Manager:



- If you need to, feel free to contact our customer support at support@projetlineaire.com